

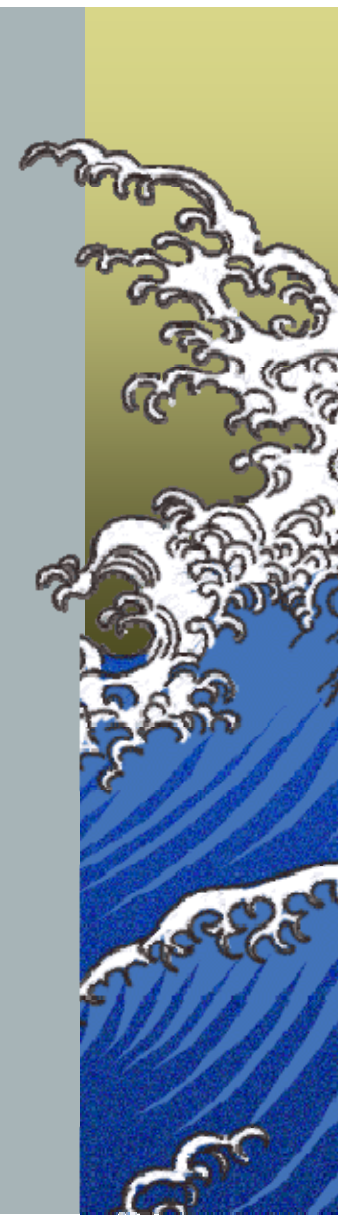
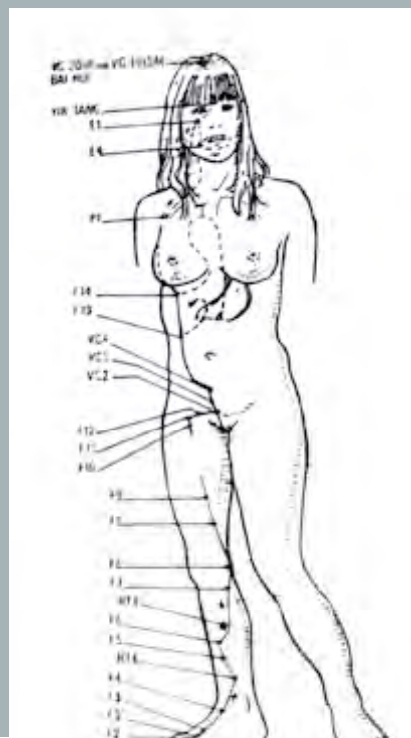
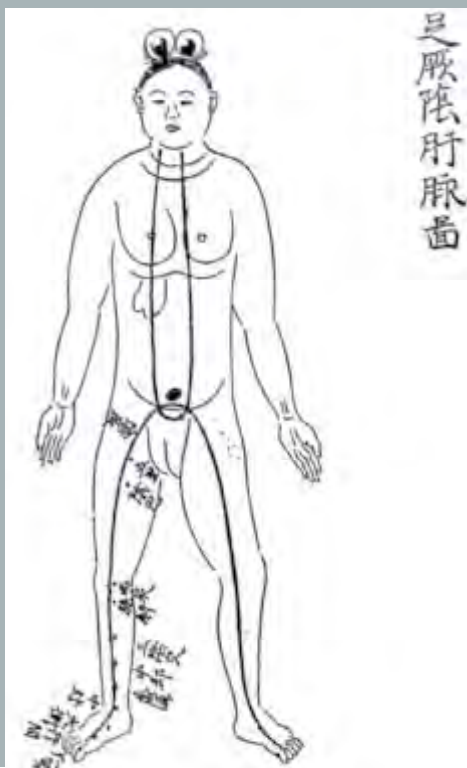
# NEUF MOIS, DIX LUNES

*LES PRESCRIPTIONS  
HYGIÉNO-DIÉTÉTIQUES  
DE LA FEMME ENCEINTE  
POUR  
CHAQUE MOIS LUNAIRE DE GROSSESSE*

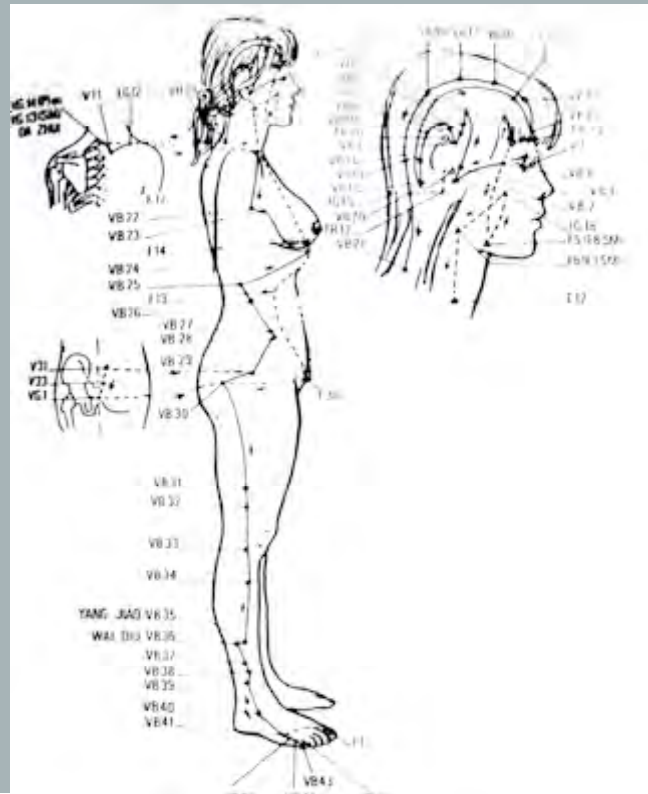
*Dr Jean Marc Eyssalet*



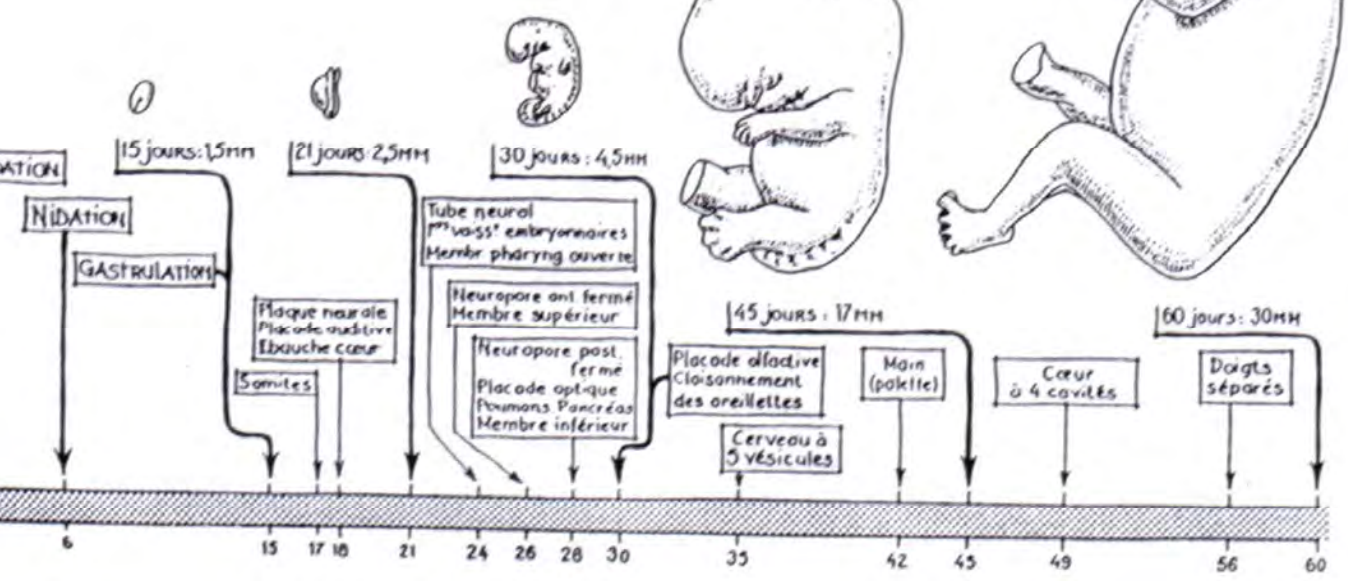
# Premier mois lunaire



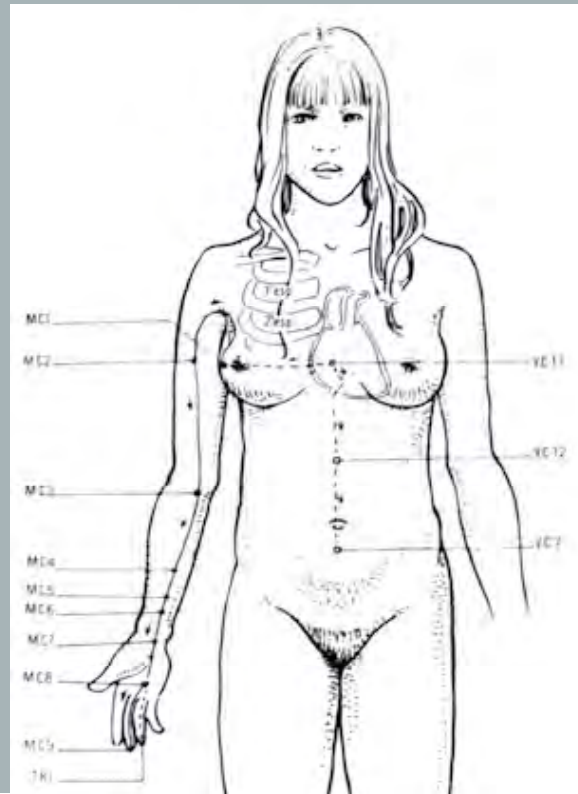
# Second mois lunaire



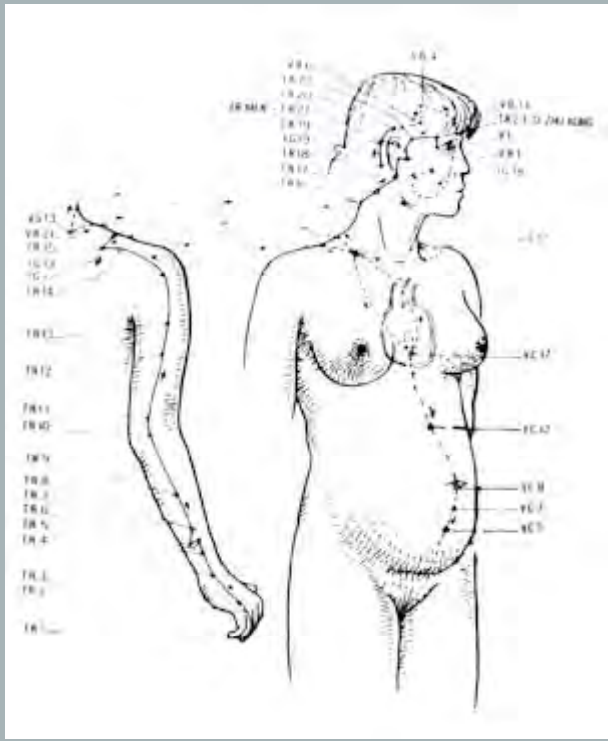
ŒUF FÉCONDÉ AU FŒTUS : LES SOIXANTE PREMIERS JOURS  
TUCHMANN-DUPLESSIS



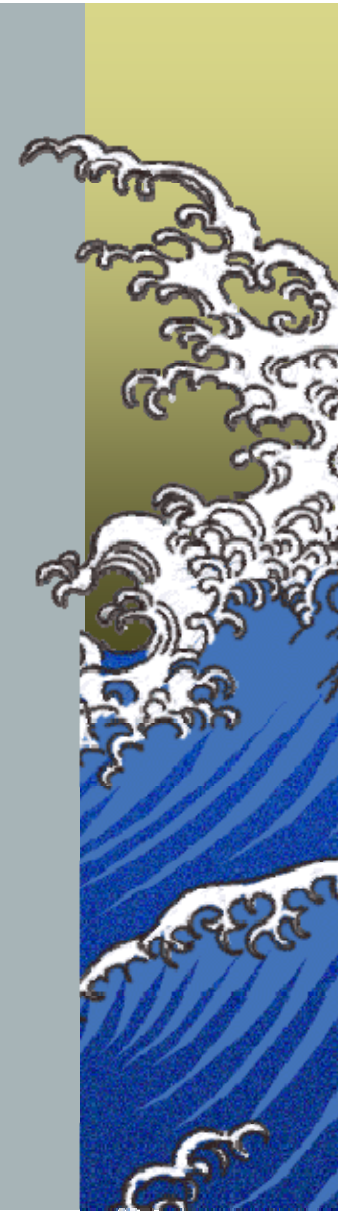
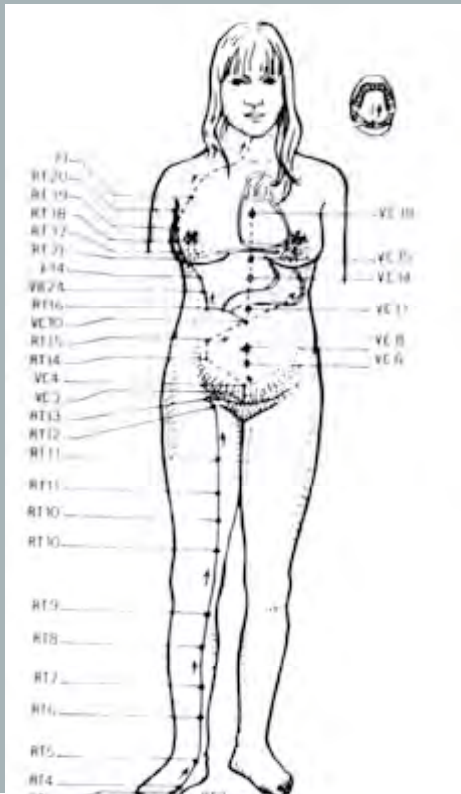
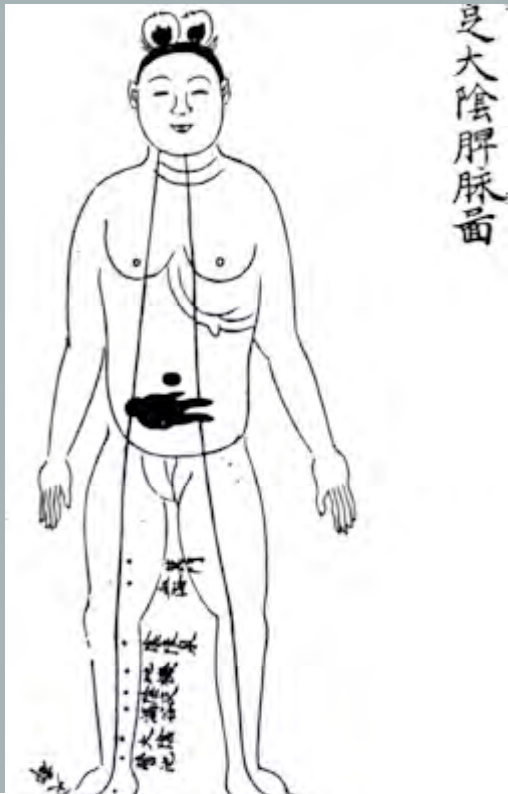
# Troisième mois lunaire



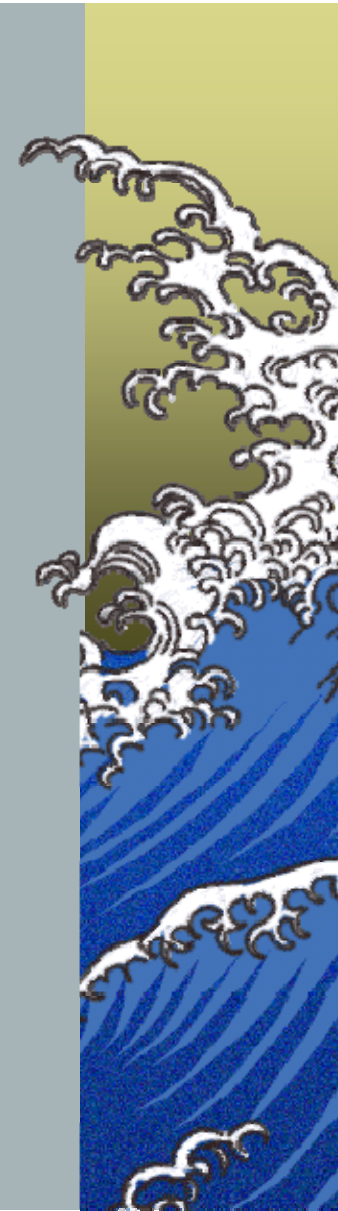
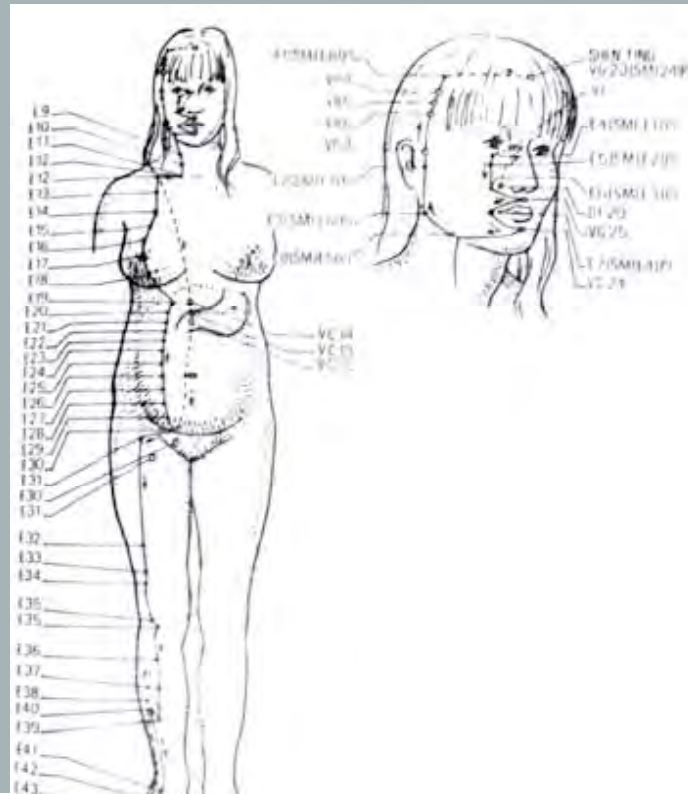
# Quatrième mois lunaire



# Cinquième mois lunaire

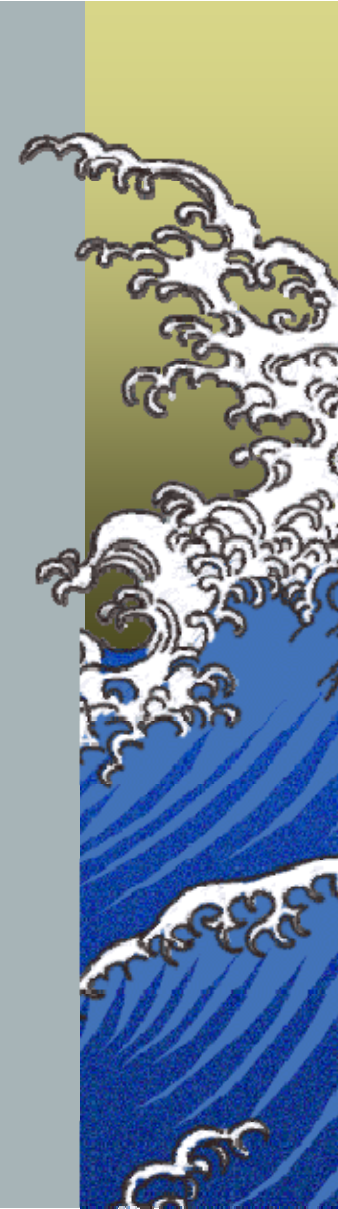
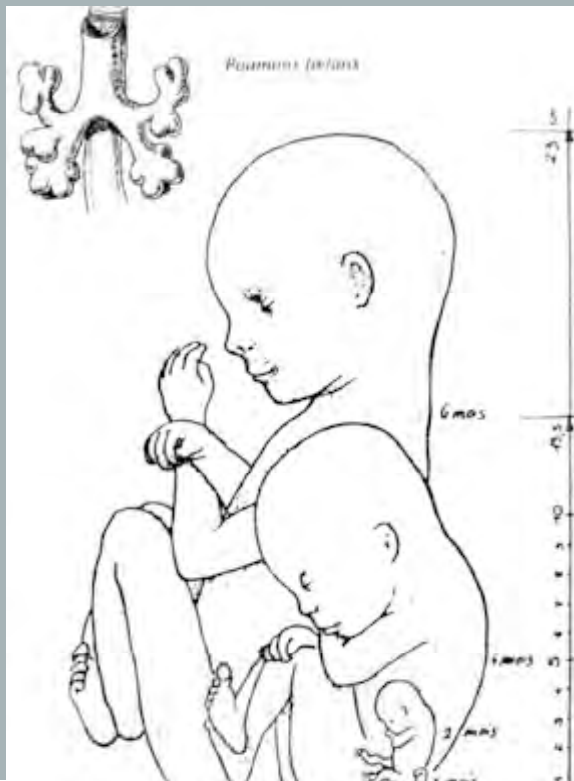


# Sixième mois lunaire

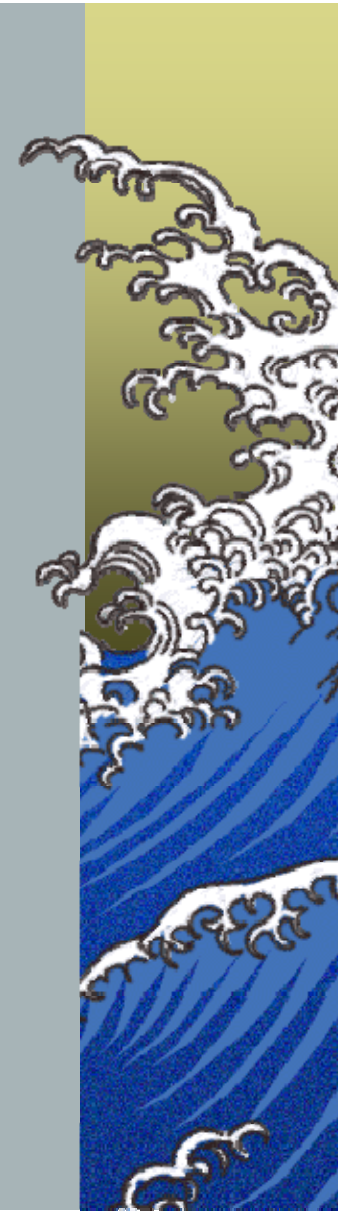
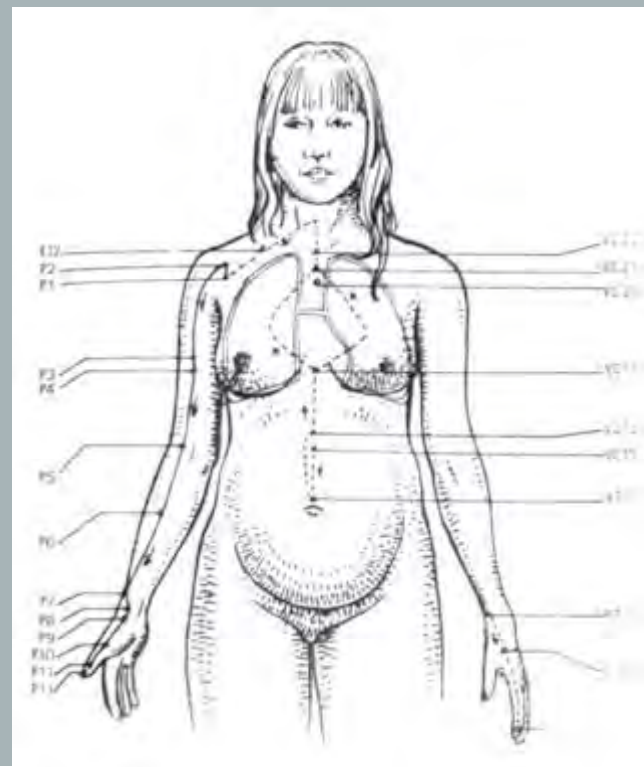




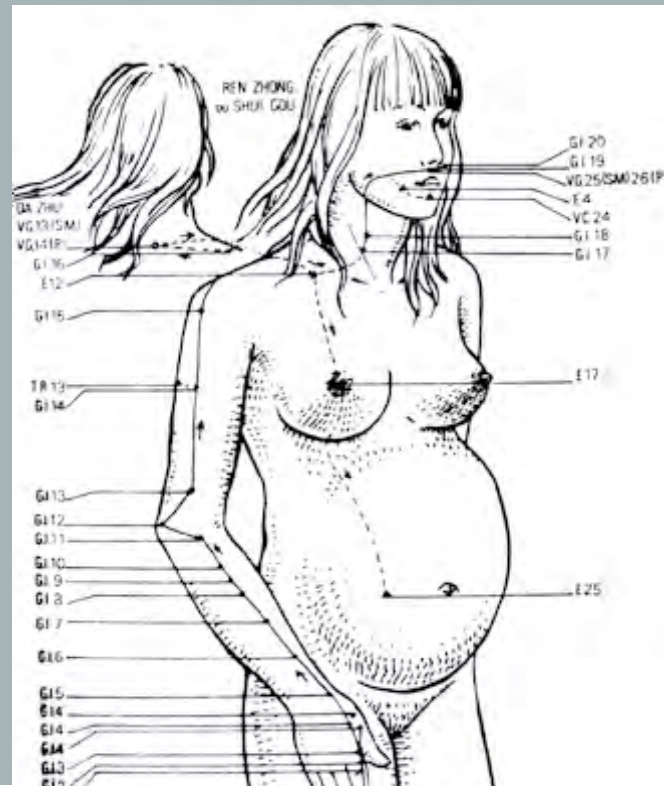
# Les différentes tailles du fœtus



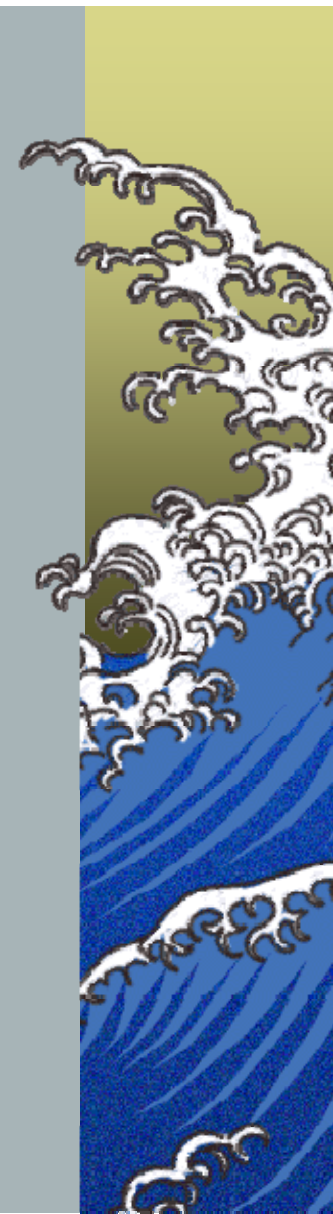
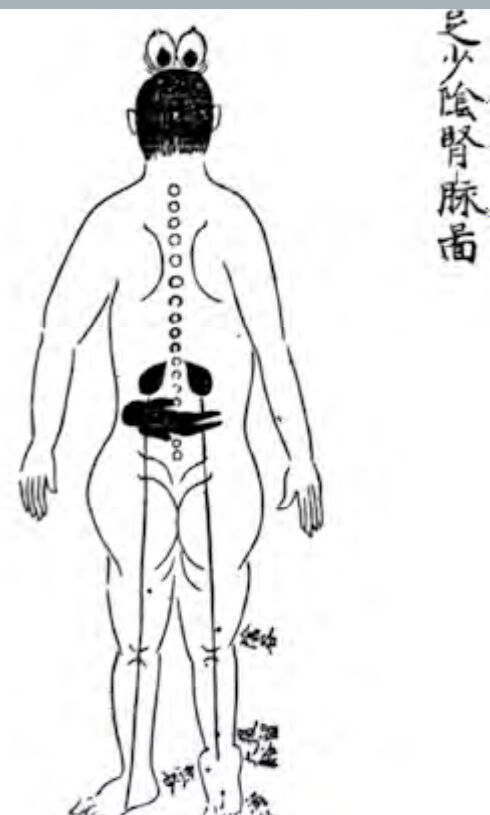
# Septième mois lunaire



# Huitième mois lunaire



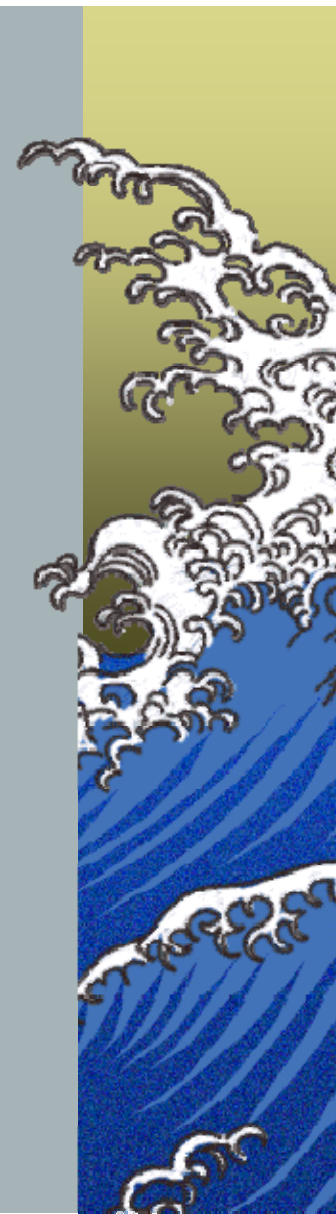
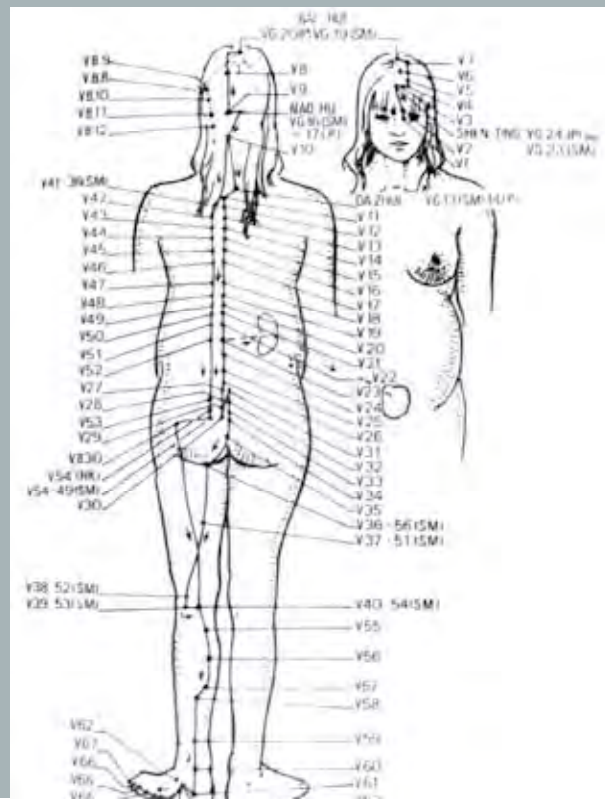
# Neuvième mois lunaire



# Dixième mois lunaire



足太陽膀胱脈圖



## Conclusion :

*l' épigenèse est... précoce chez l'homme,  
elle se produit (bien avant la naissance)  
par enregistrement des conditions de vie  
procurees par le milieu utérin... Nous  
avons là le modèle d'une épigenèse à la  
fois comme gravure et structure ».*

*(Jean Marie Delassus)*

